



Mission
Island

Arafura Sea

CAPE
YORK

GULF
OF
CARPENTARIA

Coral
Sea

Indian
Ocean

Western
Australia

Northern
Territory

Queensland

AUSTRALIA

South
Australia

New South
Wales

Victoria

Darwin

Kuraman
Desert

Wyndham

Derby

Cooktown

Cairns

Townsville

Cloncurry

Alice Springs

Rockhampton

Charleville

Brisbane

Bourke
Darling

Port Augusta

Geraldton

Coolgardie

Perth

Albany

Adelaide

Murray

CANBERRA

Sydney

Melbourne

Indian Ocean

Tasmania

TASMANIA

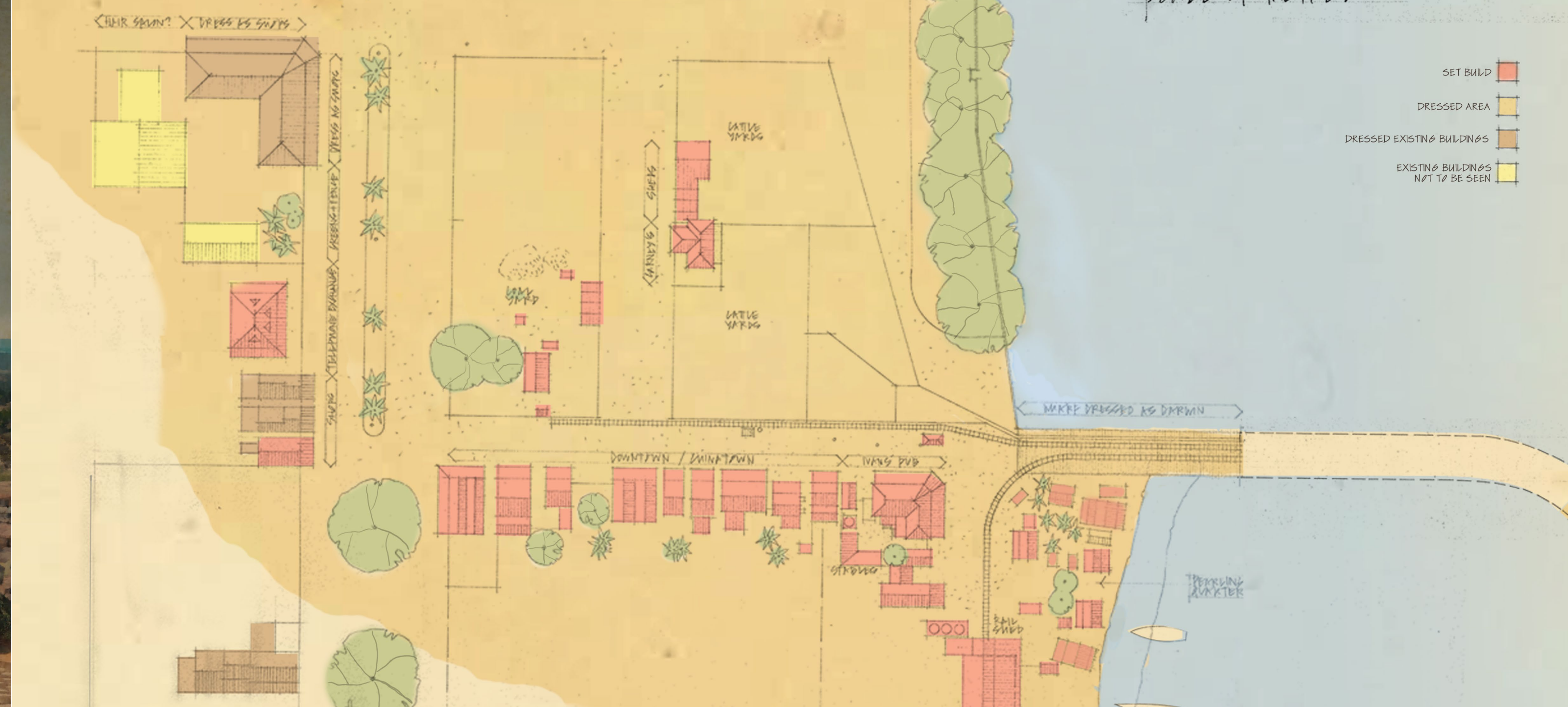
Hobart

ABORIGINAL AND TORRES STRAIT ISLANDER READERS
SHOULD BE AWARE THAT THE FOLLOWING BOOK
CONTAINS PHOTOGRAPHY OF DECEASED PERSONS.

WE ACKNOWLEDGE ABORIGINAL AND TORRES STRAIT ISLANDER
PEOPLES AS THE TRADITIONAL CUSTODIANS OF THE LAND ON
WHICH WE WORK AND LIVE, AND RECOGNISE THEIR CONTINUING
CONNECTION TO LAND, WATER AND COMMUNITY. WE PAY OUR
RESPECTS TO ELDERS PAST, PRESENT AND EMERGING.







DARWIN 1939

"We who knew the old Darwin and loved it for its sins, will never forget that wilful waste of colour - bamboo lattices a quivering prism of leafy light, the road to East Point splashed red with poincianas reflected in the pools, the Indian weave of Vestey's Gully, the grand march of the coconut palms to the technicolour Gardens"



Draft concept illustration of Stokes Hill Wharf, Darwin, using Bowen Wharf, Queensland, as a template.



Draft concept illustration of Stokes Hill Wharf, Darwin,



Draft concept illustration of Stokes Hill Wharf, Darwin,



Draft concept illustration of Stokes Hill Wharf cattle yards, Darwin, using Bowen Wharf as a template.



Draft concept illustration of Stokes Hill Wharf cattle race looking towards hero pub, using Bowen Wharf as a template.



Draft concept illustration of view of cattle yards from Gracie's office balcony, using existing Bowen building as a template.



Draft concept illustration of Stokes Hill Wharf.



Draft concept illustration of Stokes Hill Wharf.

Draft concept illustration of Stokes Hill Wharf.



Draft concept illustration of Stokes Hill Wharf.



Draft concept illustration of Stokes Hill Wharf, Sarah's arrival



Draft concept illustration of Stokes Hill Wharf, Sarah's arrival



Bowen Wharf, Queensland, looking out to sea.



Bowen Wharf, from Flagstaff Hill, Bowen, Queensland.





Draft concept illustration of Stokes Hill Wharf, Sarah's arrival



Draft concept illustration of Stokes Hill Wharf, Sarah's arrival, Travellers Walk



Draft concept illustration of Stokes Hill Wharf, Sarah's arrival, Travellers Walk

Darwin Wharf 24.11.05
Dorsten '05



original photo



CONCEPT



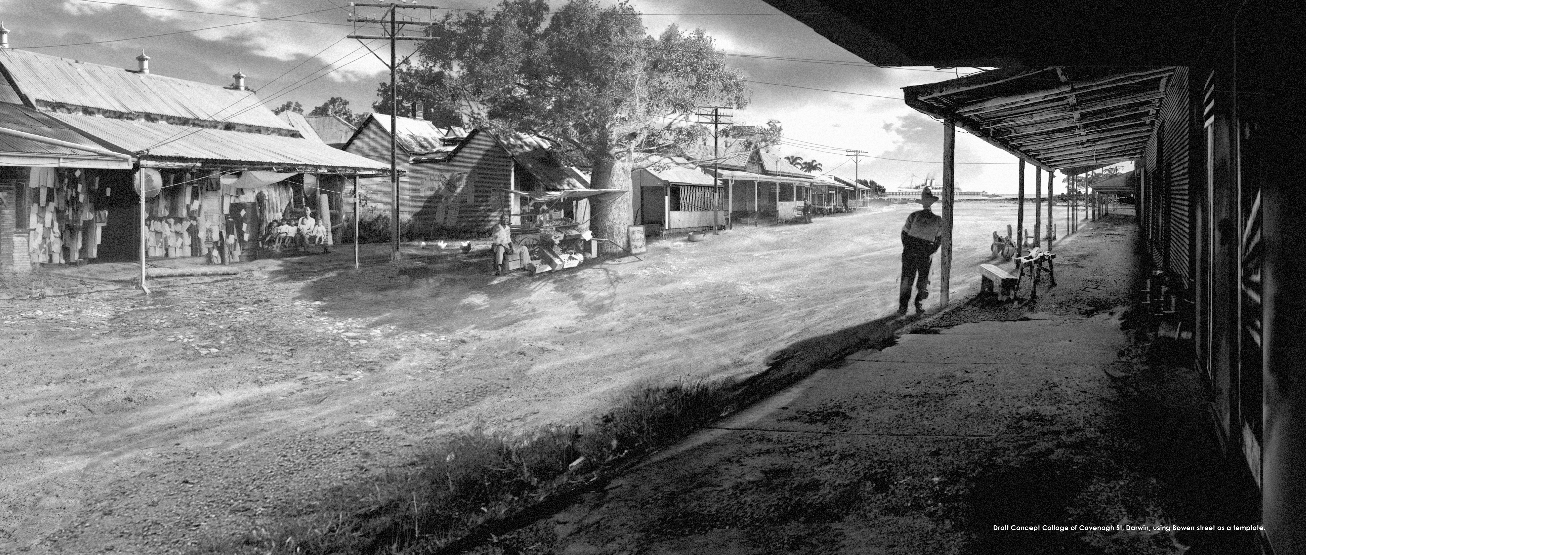
CHINATOWN, DARWIN







Draft Concept Collage of Cavenagh St, Darwin, using Bowen street as a template.



Draft Concept Collage of Cavenagh St, Darwin, using Bowen street as a template.



JOURNEY TO FARAWAY DOWNS

FARAWAY DOWNS



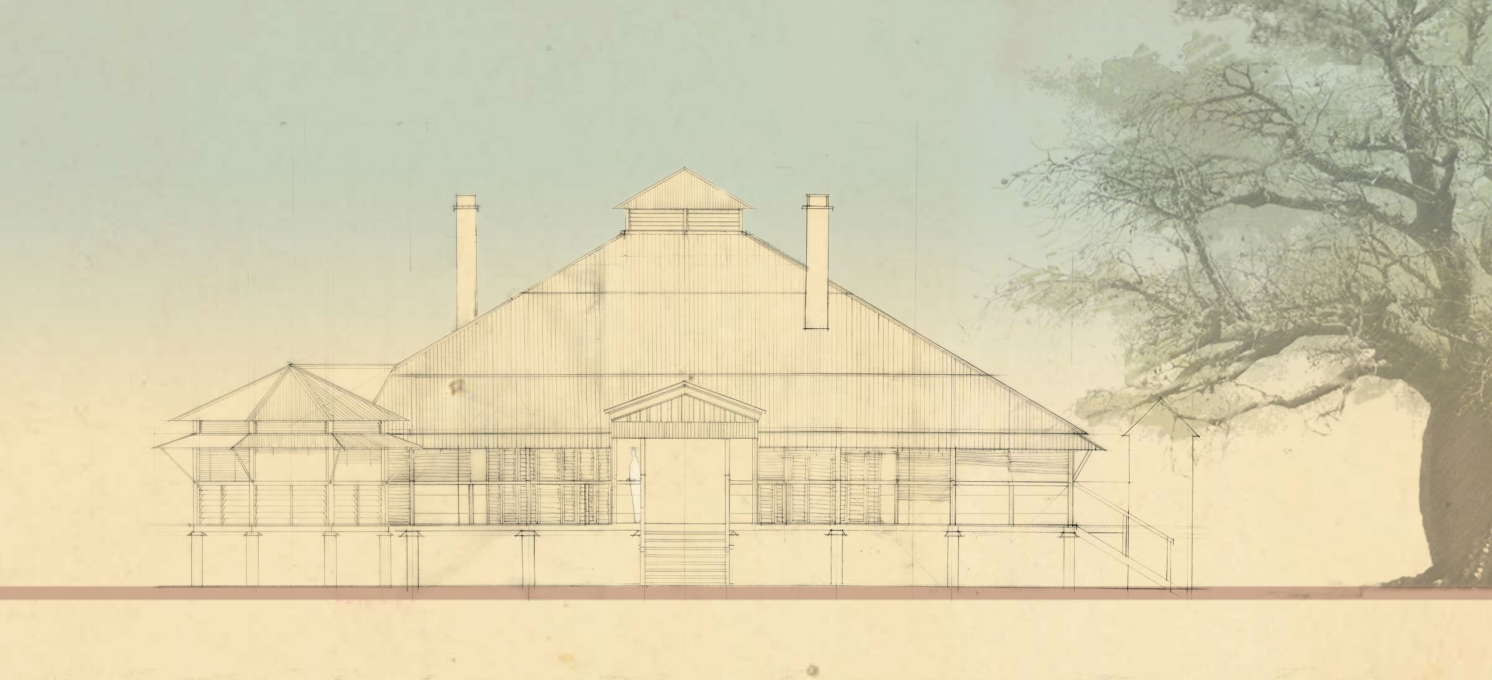
Faraway Downs dry season , Draft Concept.



Faraway Downs wet season , Draft Concept.



Faraway Downs, Draft Concept.



Draft front elevation of Homestead.



Faraway Downs, Draft Concept.



Faraway Downs, Draft Concept.





FARAWAY DOWNS

The Territory was a new world with a
vengeance, where areas vast as a
European kingdom could be taken up
for a lifetime by a swing of a surveyor's
compass on a totally blank map.

THE TERRITORY BY ERNESTINE HILL









"The drover was the true product of the country because his nature was shaped by the environment. He was a man who could be alone for long periods without feeling lonely. Like all bush men, he was as nearly self-sufficient as he could be; and he had the kind of solitary courage which can face a maddened steer or a furiously bucking horse without the necessity of an audience to bolster his nerve." - 'The Drovers'

Australia Set Photography.



DROVING

Sun-up at Elsey station, Northern Territory.
The spirit of the outback. Author - Nigel Austin.











Draft concept illustration of the drove through Purnululu, WA.



Draft concept illustration of Warrabindi's cave in Purnululu, WA.



Draft concept illustration of the stampede in Purnululu, WA.



Draft concept illustration of the stampede in Purnululu, WA.



Australia Set Photography.

**“We belong to the ground
It is our power and we must stay
Close to it or maybe
We will get lost.”**

Narritjin Maymuru, Yirrkala



TRADITIONAL ABORIGINALS
“Without the land we’d be lost people.”



THE MISSION

“The welfare just grabbed you where they found you. They’d take them in threes and fours, whatever. The Native Welfare blokes used to come to every station and see where us half caste kids were. They used to drive right down to Port Hedland. Our people would hide us, paint us with charcoal. I was taken to Moola Bulla. The Welfare bloke ... sent his son ... to pick up me and another boy. We were about 5-6 years old, and my mother was allowed to come with us in the manager’s car and then he took her away.”

Source: Bringing them Home Report

“One day policeman come along, he looking for children – half caste kids – he pick ‘em up. Just like lambs, never been asked. When mothers and fathers complain policeman just knock ‘em down.”

Source: 'Above Capricorn: Aboriginal Biographies from Northern Australia' by Stephen Davis

THE BOMBING OF DARWIN







HOW MANY LOVED YOUR MOMENTS OF GLAD GRACE
AND LOVED YOUR BEAUTY WITH LOVE FALSE OR TRUE
BUT ONE MAN LOVED THE PILGRIM SOUL IN YOU
AND LOVED THE SORROWS OF YOUR CHANGING FACE
W.B YEATS





Mission
Island

Arafura Sea

CAPE
YORK

GULF
OF
CARPENTARIA

Coral
Sea

Indian
Ocean

Western
Australia

Northern
Territory

Queensland

AUSTRALIA

South
Australia

New South
Wales

Victoria

Darwin

Kuraman
Desert

Wyndham

Derby

Palmerston

Cooktown

Cairns

Townsville

Cloncurry

Alice Springs

Rockhampton

Charleville

Brisbane

Bourke
Darling

Port Augusta

Geraldton

Coolgardie

Perth

Albany

Adelaide

Murray

CANBERRA

Sydney

Melbourne

Indian Ocean

Tasmania

TASMANIA

Hobart